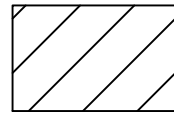
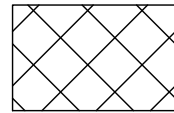


LEGEND



COLD PLANE & OVERLAY 0.15'



COLORED (TERRACOTTA) & STAMPED
(10 IN. SQUARE TILE PATTERN)
CROSSWALK PATHWAY (1219 SQ. FT)



SKIKOS PROPERTIES LLC
APN 125-091-035
(1289)

ROSELAND PARK
APN 125-091-034
(1355)

FRED & HELEN BAUM TR ET AL
APN 125-091-033
(1415)

STA 148+20.492 SEBASTOPOL RD
STA 52+95.553 BURBANK AVE

ROSELAND STORAGE MASTER LLC
APN 125-091-031
(1435)

REPLACE (E) CURB RAMP WITH
CASE D RAMP, SEE SHEET 5

**BEGINNING OF PROJECT
CONFORM
STATION 146+70.000**

THOMAS O. & VALERIE G. MURPHY TR
APN 125-142-069
(1290)

**END OF PROJECT
CONFORM
STATION 150+25.000**

ROSIE B. STEVENS
APN 125-142-066
(1350)

REPLACE (E) CURB RAMP WITH
CASE C RAMP, SEE SHEET 4

SCOT CARL & DENISE RAE RANEY
APN 125-142-065
(1380)

ENGINEER'S CENTERLINE

$\Delta = 1'27'39"$

$R = 10,000.000$

$T = 127.489$

$L = 254.963$

INSTALL DETECTABLE WARNING
SURFACE, SEE SHEET 6

SALVADOR & BLANCA V. SAHAGUN
APN 125-141-025
(1410)

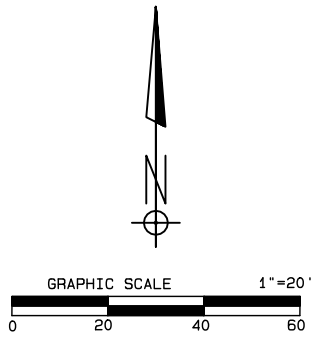
**CONFORM
STATION 51+41.000**

GARY GUANELLA TR ET AL
APN 125-142-011
(814)

MATTHEW J. &
KELLI D. RIVERAS
APN 125-141-024
(1450)

VAN DU PHAM TR
APN 125-141-023
(1480)

AVENUE PLAZA LLC
APN 125-141-026
(1520)



DESIGN	BY OLGUIN CABAN
DRAWING	BY OLGUIN CABAN
CHECKED	BY REX CUMMINS

REGISTERED CIVIL ENGINEER

PLANS APPROVAL DATE

R:\Current Projects\7009-Burbank Ave\Burbank_Ave.pro DATE: 11/16/2009 TIME: 11:48AM

"AS BUILT" INFORMATION TO BE
COMPLETED AFTER CONSTRUCTION

CONSTRUCTION COMPLETED:

RESIDENT ENGINEER

AS BUILT DRAWINGS BY:

DATE	REVISION	BY	APPROVED
11/2009	UPDATED LEGEND	OPC	REC

PLAN				
ROAD NUMBER	BUDGET NUMBER	FISCAL YEAR	SHEET NUMBER	TOTAL SHEETS
78011	C07009	2009-10	3	13

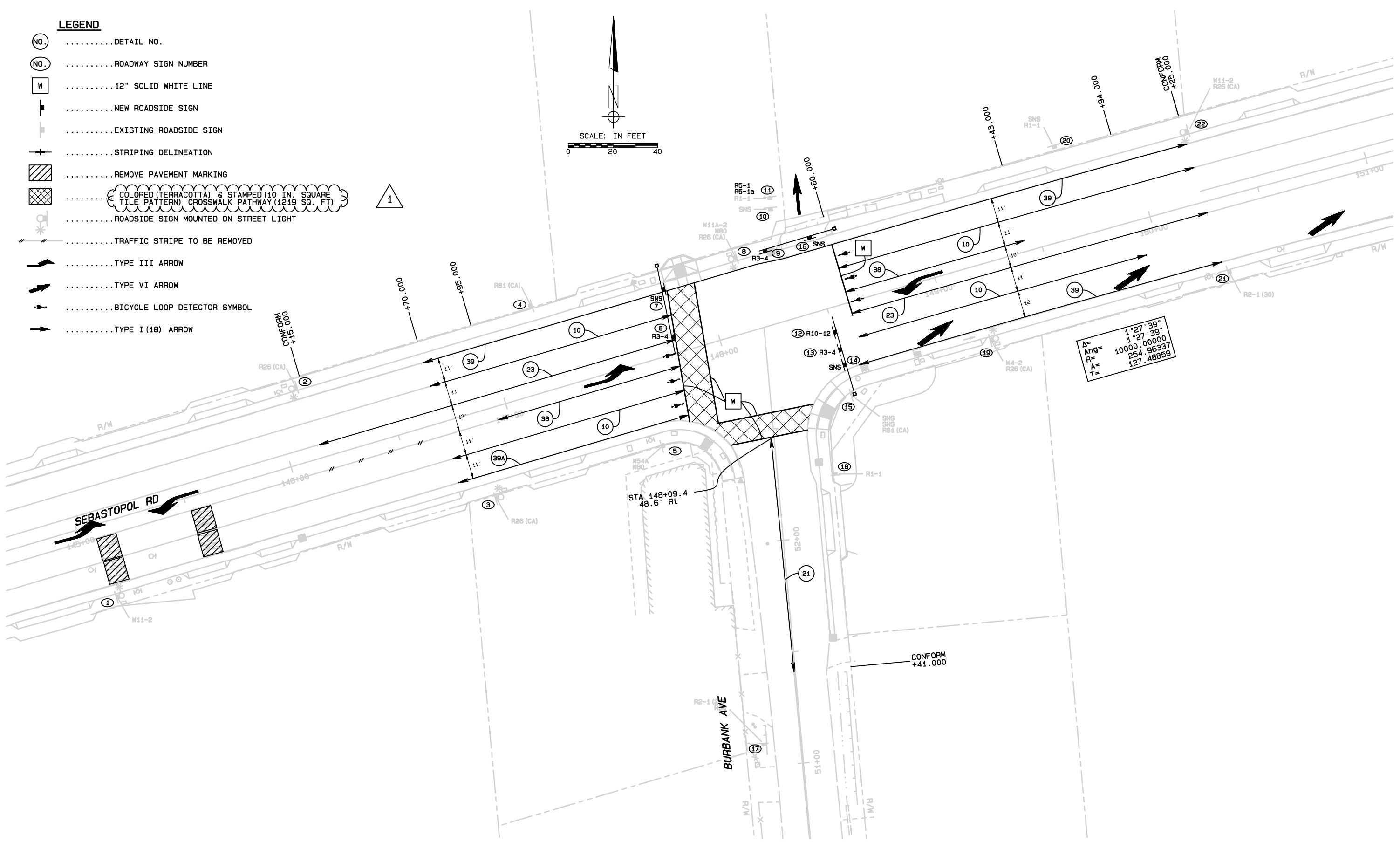
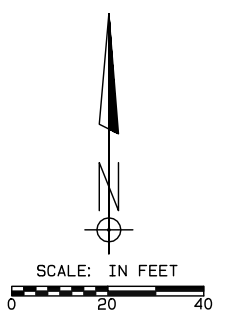
COUNTY OF SONOMA
DEPARTMENT OF TRANSPORTATION AND PUBLIC WORKS
PHILLIP M. DEMERY, DIRECTOR

PROJECT: **SIGNALIZATION OF SEBASTOPOL ROAD
AT BURBANK AVENUE**

DATE: JULY 2009 SCALE: 1" = 20'

LEGEND

- (NO.)DETAIL NO.
- (NO.)ROADWAY SIGN NUMBER
- W12" SOLID WHITE LINE
- [Symbol]NEW ROADSIDE SIGN
- [Symbol]EXISTING ROADSIDE SIGN
- [Symbol]STRIPING DELINEATION
- [Symbol]REMOVE PAVEMENT MARKING
- [Symbol]COLORED (TERRACOTTA) & STAMPED (10 IN. SQUARE TILE PATTERN) CROSSWALK PATHWAY (1219 SQ. FT)
- [Symbol]ROADSIDE SIGN MOUNTED ON STREET LIGHT
- [Symbol]TRAFFIC STRIPE TO BE REMOVED
- [Symbol]TYPE III ARROW
- [Symbol]TYPE VI ARROW
- [Symbol]BICYCLE LOOP DETECTOR SYMBOL
- [Symbol]TYPE I (18) ARROW



A=	1'27'39"
Ang=	1'27'39"
R=	10000.00000
A=	254.96337
T=	127.48859

DESIGN	BY REX CUMMINS
DRAWING	BY OLGUIN CABAN
CHECKED	BY CHRIS MOCNY

REGISTERED CIVIL ENGINEER

 PLANS APPROVAL DATE



"AS BUILT" INFORMATION TO BE COMPLETED AFTER CONSTRUCTION
 CONSTRUCTION COMPLETED:
 RESIDENT ENGINEER _____
 AS BUILT DRAWINGS BY:

DATE	REVISION	BY	APPROVED
11/2009	1 UPDATED LEGEND	OPC	REC

STRIPING PLAN				
ROAD NUMBER	BUDGET NUMBER	FISCAL YEAR	SHEET NUMBER	TOTAL SHEETS
78011	C07009	2009-10	9	13

COUNTY OF SONOMA
 DEPARTMENT OF TRANSPORTATION AND PUBLIC WORKS
 PHILLIP M. DEMERY, DIRECTOR
 PROJECT: **SIGNALIZATION OF SEBASTOPOL ROAD AT BURBANK AVENUE**
 DATE: JULY 2009 SCALE: 1" = 20'

R:\Current Projects\7009-Burbank Ave\Burbank_StripeSum.pro DATE: 11/16/2009 TIME: 11:49AM