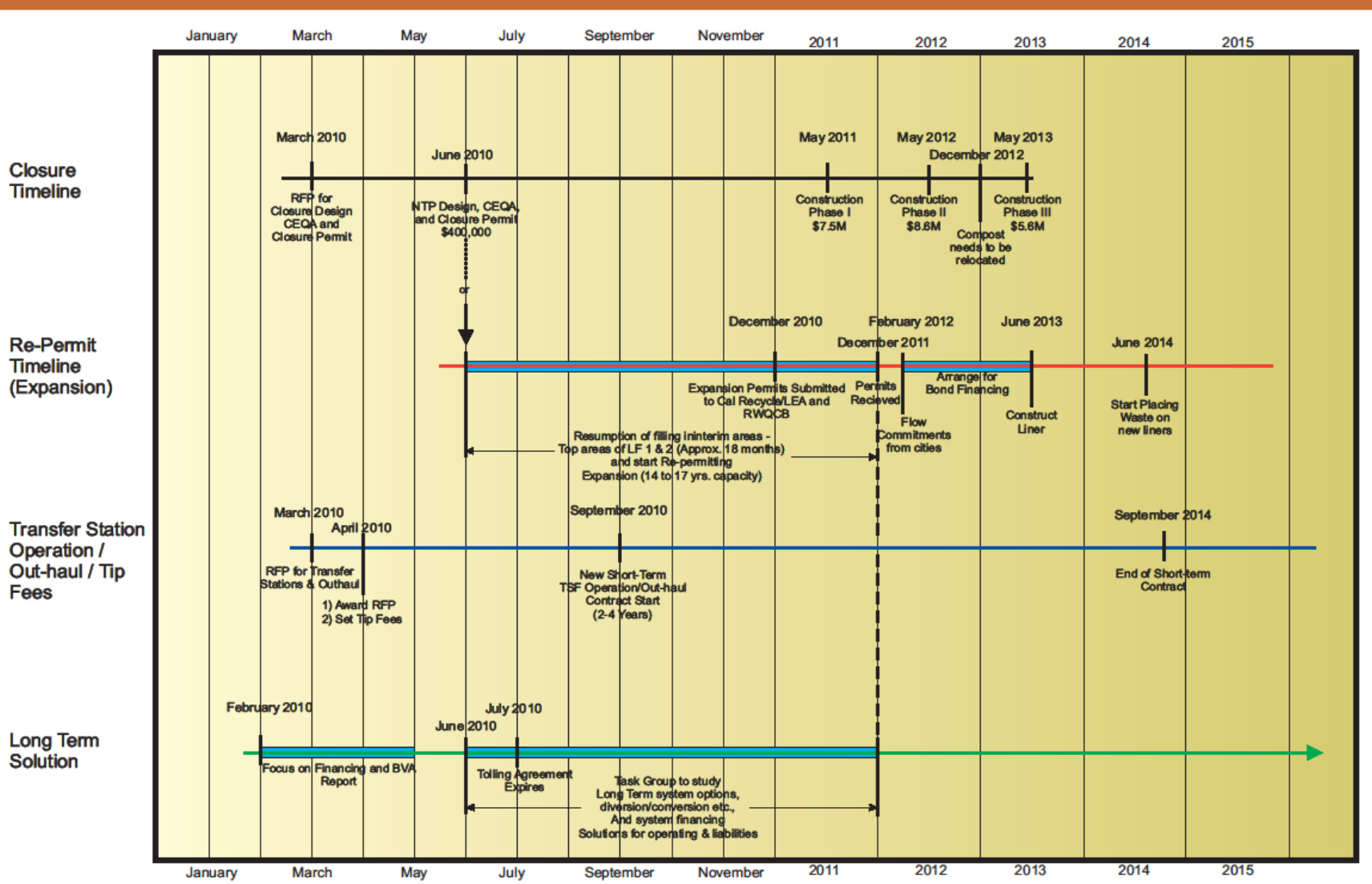


# **Sonoma County/City Solid Waste Advisory Group**

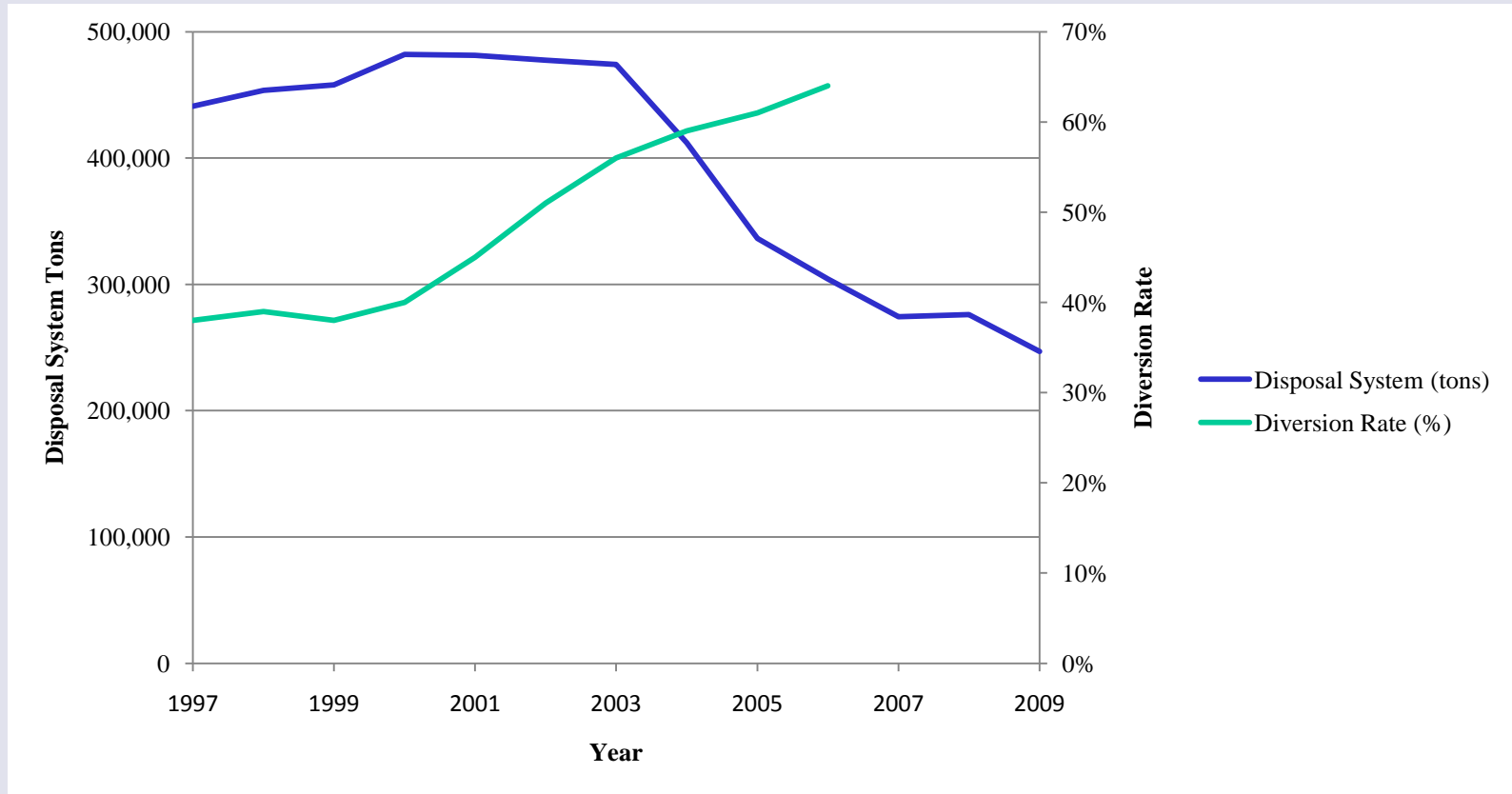
February 22, 2010

# Issues and Timelines



# County Refuse System Finances

# System Trends



# FY 08/09 Actual

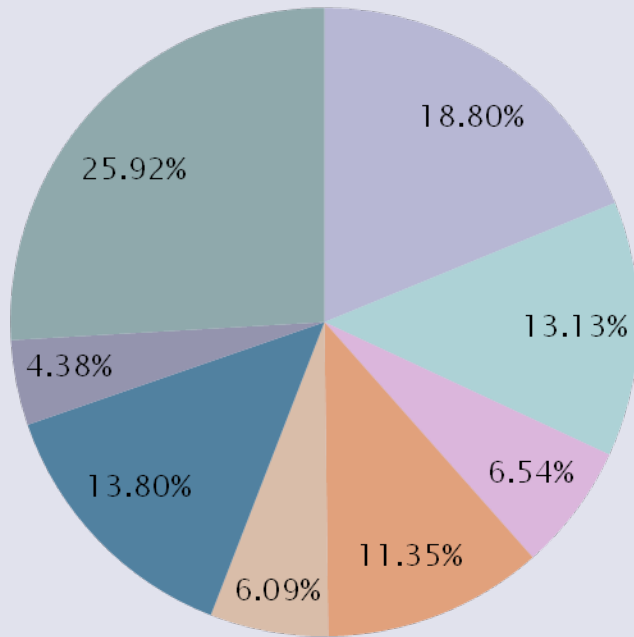
[263,087 Tons]

<u>Expenses</u>	<u>Cost</u>
Transfer Station Operations	\$6.1M
Central Landfill Environmental/Imp	\$4.3M
Closed Landfill Maintenance	\$2.1M
System Administration	\$3.7M
Other Expenses (equip./system maint.)	\$2.0M
Transport Refuse out of County	\$4.5M
Bay Area Landfill Disposal	\$8.4M
JPA Fees	<u>\$1.4M</u>
Total Expense	\$32.4M
<u>Revenues</u>	
Tipping Fees (\$91.80/Ton)	\$24.4M
Power Sales	\$3.0M
Misc Revenues (rents, scrap metal, etc.)	\$1.4M
Interest Restricted Funds	\$0.5M
Use of Fund Balance	<u>\$3.1M</u>
Total Revenue	\$32.4M

# FY 08/09 Actual

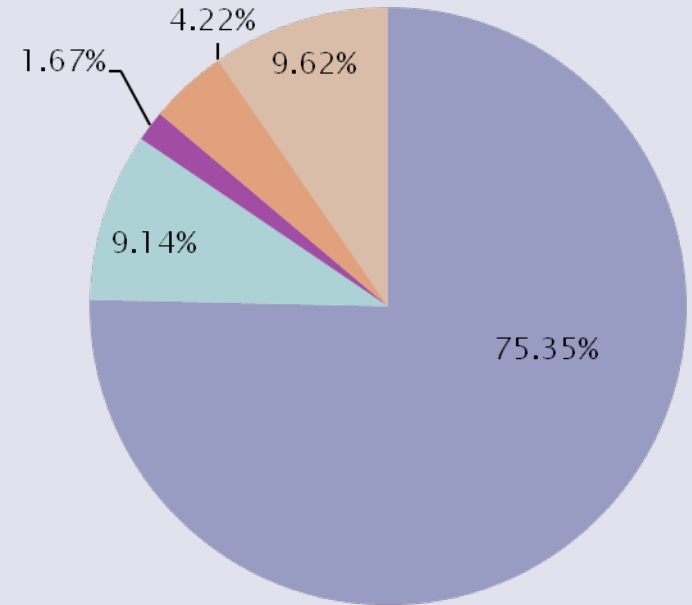
[263,087 Tons]

## Expenses



- Transfer Station Ops
- Closed Landfill Maintenance
- Other
- JPA Fees
- Central Env/Imp
- System Admin
- Transport Refuse
- Landfill Disposal

## Revenues



- Tipping Fees
- Interest
- Use of Fund Balance
- Power Sales
- Miscellaneous

# FY 09/10 Budget

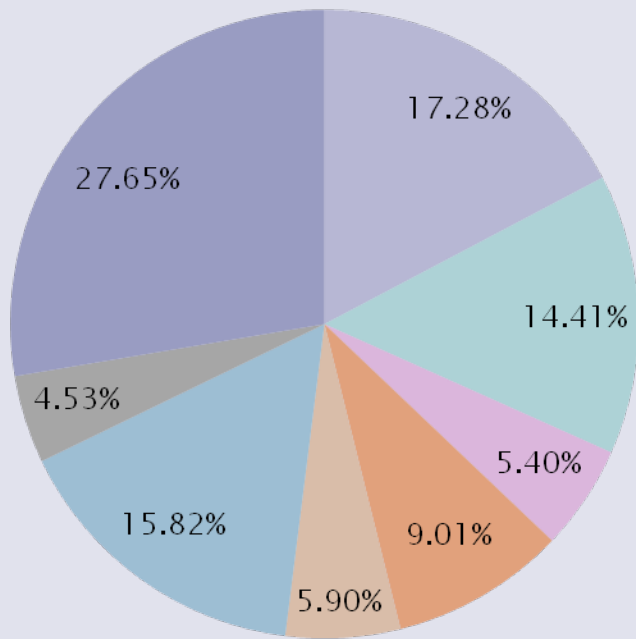
[270,000Tons]

<u>Expenses</u>	<u>Cost</u>
Transfer Station Operations	\$5.6M
Central Landfill Environmental/Imp	\$4.6M
Closed Landfill Maintenance	\$1.7M
System Administration	\$2.9M
Other Expenses (equip./system maint.)	\$1.9M
Transport Refuse out of County	\$5.1M
Bay Area Landfill Disposal	\$8.9M
JPA Fees	<u>\$1.5M</u>
Total Expense	\$32.2M
<u>Revenues</u>	
Tipping Fees (\$100.50/Ton)	\$27.5M
Power Sales	\$2.8M
Misc Revenues (rents, scrap metal, etc.)	\$1.1M
Interest Restricted Funds	\$0.3M
Use of Fund Balance	<u>\$0.5M</u>
Total Revenue	\$32.2M

# FY 09/10 Budget

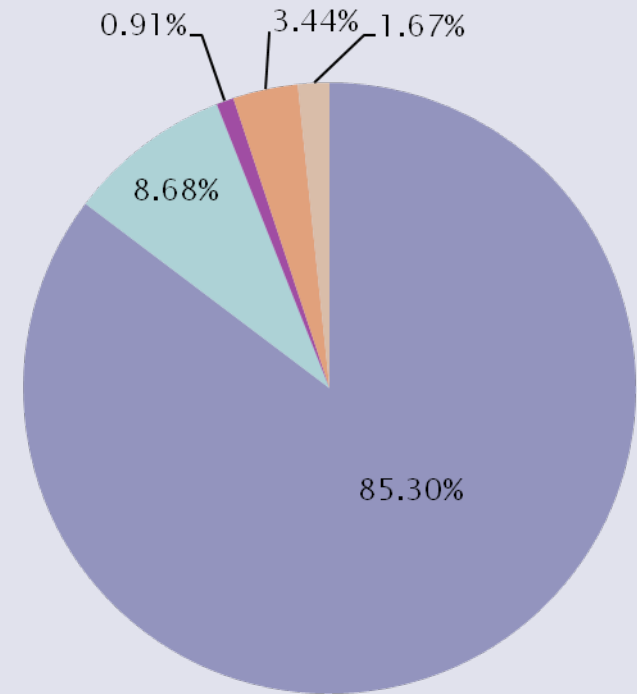
[270,000 Tons]

## Expenses



- Transfer Station Ops
- Closed Landfill Maintenance
- Other
- JPA Fees
- Central Env/Imp
- System Admin
- Transport Refuse
- Landfill Disposal

## Revenues



- Tipping Fees
- Interest
- Use of Fund Balance
- Power Sales
- Miscellaneous

# FY 09/10 Year End Fund Balances

## Financial Assurances:

Healdsburg Leak Fund	\$2,567,504
Annapolis Leak Fund	\$ 704,490
Central Leak Fund	\$2,306,347
Sonoma Leak Fund	\$2,170,837
Healdsburg Post-Closure Fund	\$ 300,000
Annapolis Post- Closure Fund	\$ 300,000
Central Closure Fund	\$9,720,900

## Fund Balances:

Unrestricted/Unreserved Fund Balance (Adopted)	\$1,584,987
Mid-Year Estimate of Fund Balance	<u>\$ 523,378</u>
Difference	(\$1,061,609)

**Questions?**