



SONOMA COUNTY/CITY SOLID WASTE ADVISORY GROUP

Agenda Item #: 4

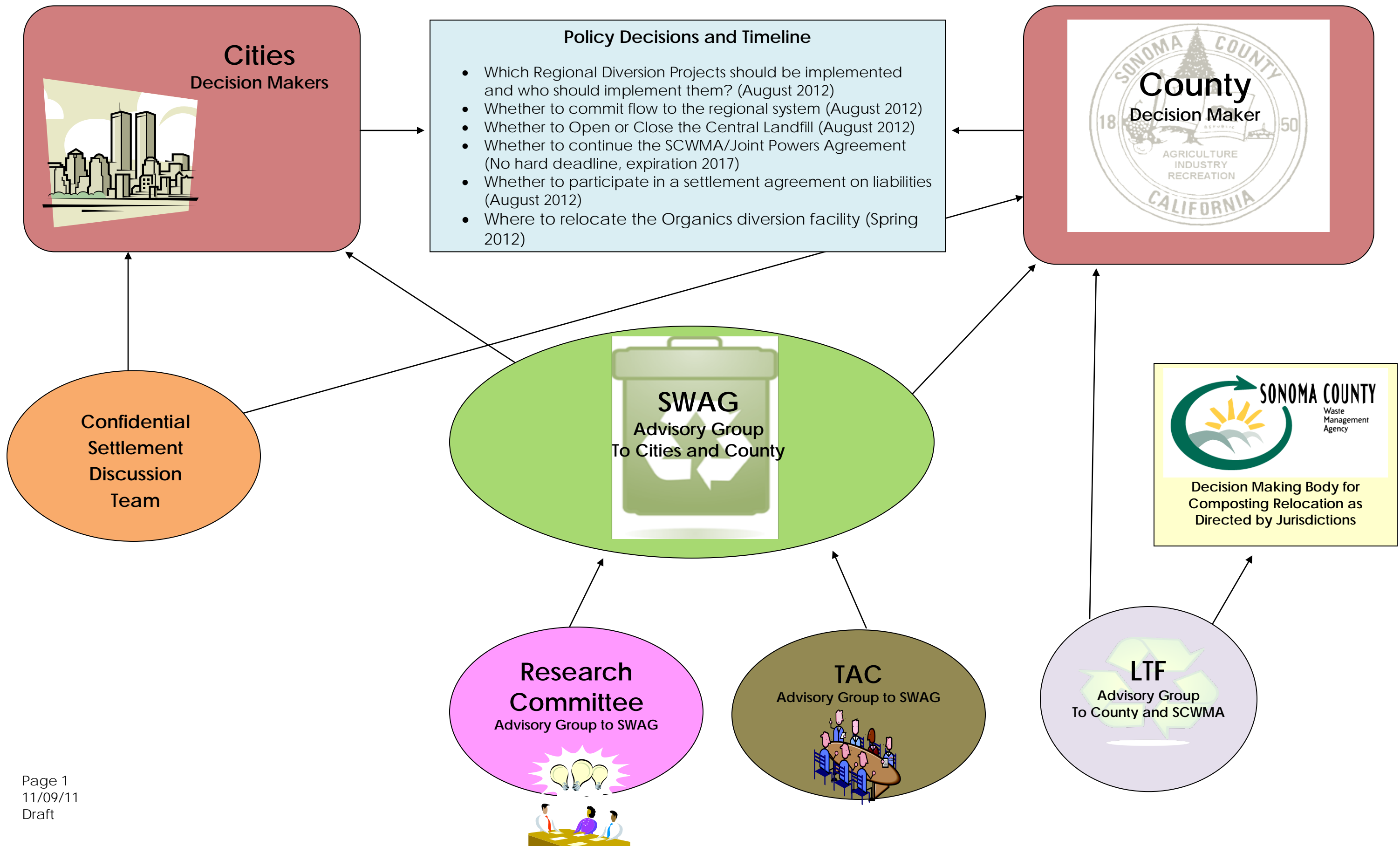
Agenda Date: Nov. 17, 2011

ITEM: Charts on Regional Waste System Planning

**Cloverdale
Cotati
Healdsburg
Petaluma
Rohnert Park
Santa Rosa
Sebastopol
Sonoma
Windsor
County of
Sonoma**

Sonoma County/City Solid Waste Advisory Group
C/O County of Sonoma Department of Transportation and Public Works
2300 County Center Drive, Suite B100
Santa Rosa, California 95403
Phone: (707) 565-2231 Fax: (707) 565-2620
http://supervisors.sonoma-county.org/boards_and_commissions.aspx

Regional Waste System Planning



Regional Waste System Planning

Role of Cities

- Franchisors of Waste and Recycling Collection within their jurisdictions
- Collectively the largest waste and recycling generators in the system
- Participants in the regional system
- Will be the recipient of SWAG and TAC recommendations
- Will be ultimate decision makers on all decisions, except final decision on Central Landfill

Policy Decisions and Timeline

- Which Regional Diversion Projects should be implemented and who should implement them? (August 2012)
- Whether to commit flow to the regional system (August 2012)
- Whether to Open or Close the Central Landfill (August 2012)
- Whether to continue the SCWMA/Joint Powers Agreement (No hard deadline, expiration 2017)
- Whether to participate in a settlement agreement on liabilities (August 2012)
- Where to relocate the Organics diversion facility (Spring 2012)

Role of County

- Franchisor of Waste and Recycling Collection within unincorporated County
- Second largest generator after Cities
- Participant in Regional System
- Owner/Operator of Regional Disposal System – Central Landfill and Transfer Stations
- Owner of 7 closed landfill sites
- Applicant for long-term operations permit for the Central Landfill (Spring 2012)
- Will be the recipient of SWAG and TAC recommendations
- Ultimate decision makers on all decisions including whether the County will open or close the Central Landfill

Role of Confidential Settlement Discussion Team

- Formed prior to SWAG by Cities and County to have confidential settlement negotiations regarding closure and post-closure and environmental liabilities associated with Central Landfill and closed landfills
- Advisory to Cities and Counties

Role of Sonoma County/City Solid Waste Advisory Group (SWAG)

- Formed at Request of County BOS to address regional solid waste planning issues
- All 9 Cities and County participating
- Advisory body to all regional jurisdictions
- Focus
 - Increase Diversion
 - Create Economically efficient system
 - Maintain local control of system
- Will provide recommendations to County and Cities on all decisions
- Complete recommendations by June 2012

Role of Sonoma County Waste Management Agency (JPA)

- Created by all 9 Cities and the County to address:
 - Household Hazardous Waste
 - Organics Diversion – Yard Waste Composting and Wood Waste
 - Diversion Education – Re-use, Recycling, HHW Disposal
 - AB 939 – Planning, Monitoring and Reporting, the responsible agency for preparation and maintenance of the County Integrated Waste Management Plan (CoIWMP)
- Joint Powers Agreement expires 2017
- 10 Board members consisting primarily of Manager level staff, on major policy decisions they get voting direction from their jurisdiction
- Current Projects requiring Jurisdictional direction
 - Organics facility relocation (complete prior to needing current location for waste disposal or closure – 2013)
 - Sustainable Funding (No deadline)
 - Plastic Bags (No deadline)
 - Extension of JPA (2017)

Role of SWAG Research Committee

- Formed by the SWAG
- Consisting of 2 SWAG members, 2 Business Sector, 1 County Manager, 1 City Manager, SCWMA Executive Director, 1 LTF Representative, 2 Environmental Sector, 2 Regulatory Agency
- Formed to develop a report for the SWAG with a preliminary list of solid waste options that feasibly address SWAG's objectives related to diversion, economic efficiency, and local control for further study (completed May 2011)

Role of Technical Advisory Committee

- Formed by the SWAG includes representatives from various Cities and the County (Managers and Attorneys)
- To advise the SWAG on issues of funding and governance for regional system

Role of AB 939 Local Task Force

- Created by the BOS prior to the creation of the SCWMA, positions are appointed by Cities, and County and other designated organizations with confirmation by the BoS. There are a total of 29 seats – (9) city reps, (5) community reps – one appointed from each Supervisorial District, (9) technical experts representing waste handling, regulatory, education, and diversion, (6) interested parties representing environmental groups (i.e. Sierra Club and Climate Protection) and community groups (i.e. League of Women Voters, Chamber of Commerce, and agriculture industry)
- Required by regulation to exist as an advisory group when the CoIWMP is being updated/revised (a SCWMA function)
- By past resolution of the BOS they became a standing committee to advise the BOS on ongoing matters related to solid waste
- Currently have members of the LTF attending both SCWMA and SWAG meetings and providing public comment on agenda items
- No current CoIWMP update is pending, no current deadlines