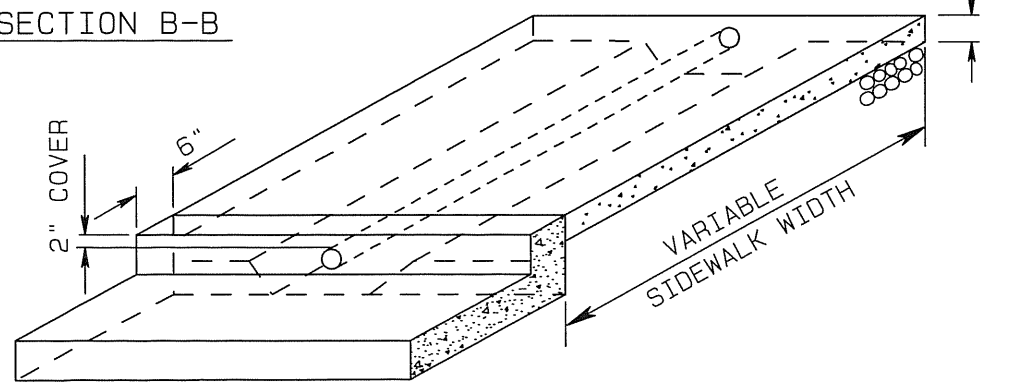
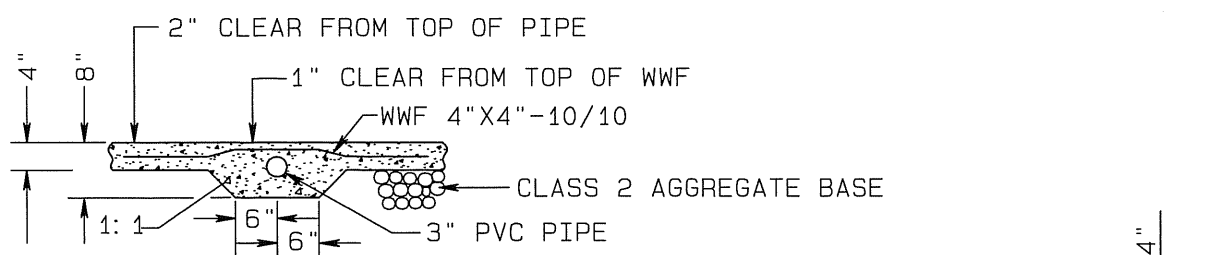
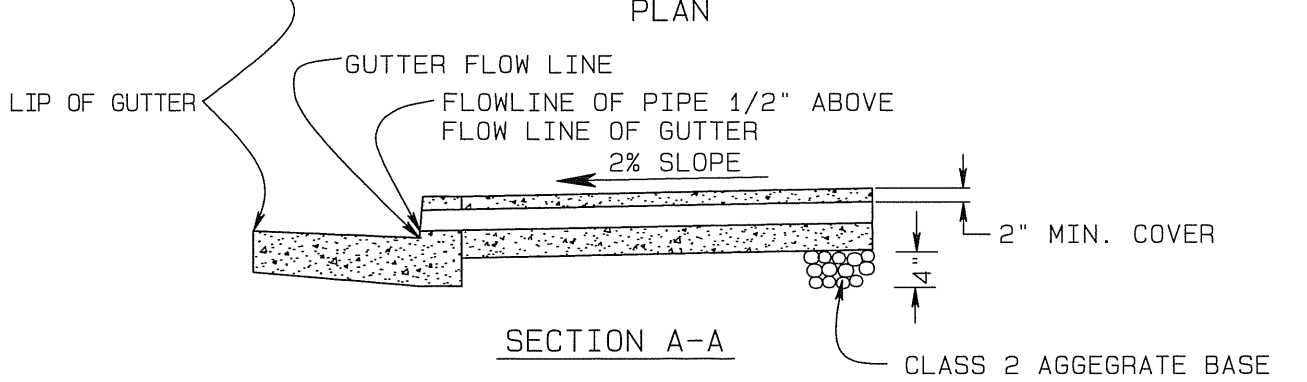


NOTE: IF SIDEWALK IS EXISTING, A SECTION MAY BE SAW CUT AT WEAKENED PLANE POINTS TO PLACE 3\"/>



NOTES:

1. LOCATION OF SIDEWALK DRAINS ARE APPROXIMATE AND MAY BE CHANGED BY THE ENGINEER AS REQUIRED BY SITE CONDITIONS.
2. SIDEWALK DRAIN TO BE 3\"/>
3. IF MORE THAN ONE DRAIN PIPE IS PLACED, WIDEN WIRE MESH PLACEMENT AND CONCRETE KEYWAY ACCORDINGLY.

<b>COUNTY OF SONOMA DEPARTMENT OF TRANSPORTATION AND PUBLIC WORKS</b>		
<b>SIDEWALK DRAIN DETAIL</b>		
DATE: MAY 2004	REVISED:	
APPROVED BY:	SCALE: NONE	DRAWING NO. <b>404</b>