

COUNTY ASSESSOR'S PARCEL MAP

TAX RATE AREA 101-12
57-008

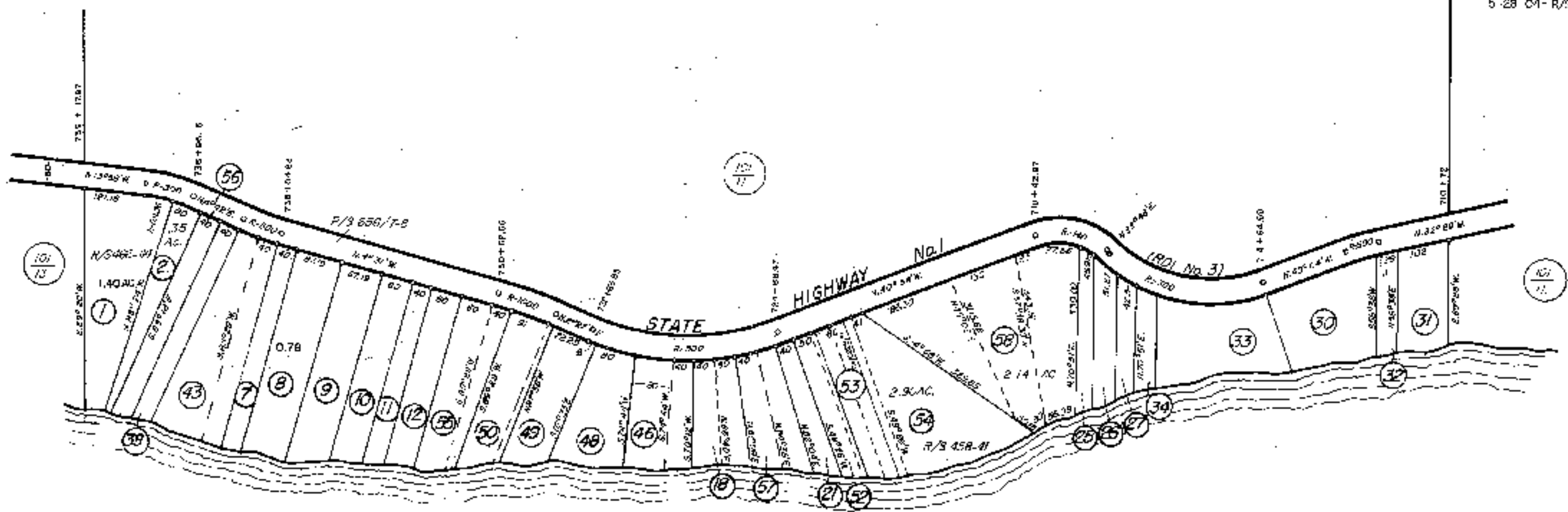
NOTE: Assessor's parcels do not necessarily constitute legal lots. To verify legal parcel status, check with the appropriate city or county community development or planning division.

NOTE: THIS MAP WAS PREPARED FOR ASSESSMENT PURPOSES ONLY. NO LIABILITY IS ASSUMED FOR THE ACCURACY OF THE DATA DELINEATED HEREON.

101-120-009



3-20-74
5-78-57
4-4-78-58
02-27-85-6/8
6-5-95-Ac. Corr. RM
b-28 CM-R/S R'



Pacific Ocean