

USGS Geologic Hazards - Wall Bracing

Geologic Data Set

- Contour Intervals [%g]
- Location of faults

Spectral Response Acceleration - Wall Bracing

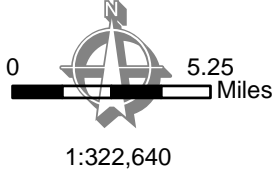
- Greater Than 150 [Sds Greater Than 1.0]
- Less Than or Equal To 150 [Sds Less Than or Equal To 1.0]

For use with wall bracing table page 20.3 Sonoma County Residential Construction Manual or California Building Code Table 2308.12.4

NOTE:
MAXIMUM CONSIDERED EARTHQUAKE GROUND MOTION 0.2 SEC SPECTRAL RESPONSE ACCELERATION [5% OF CRITICAL DAMPING]

Base Data

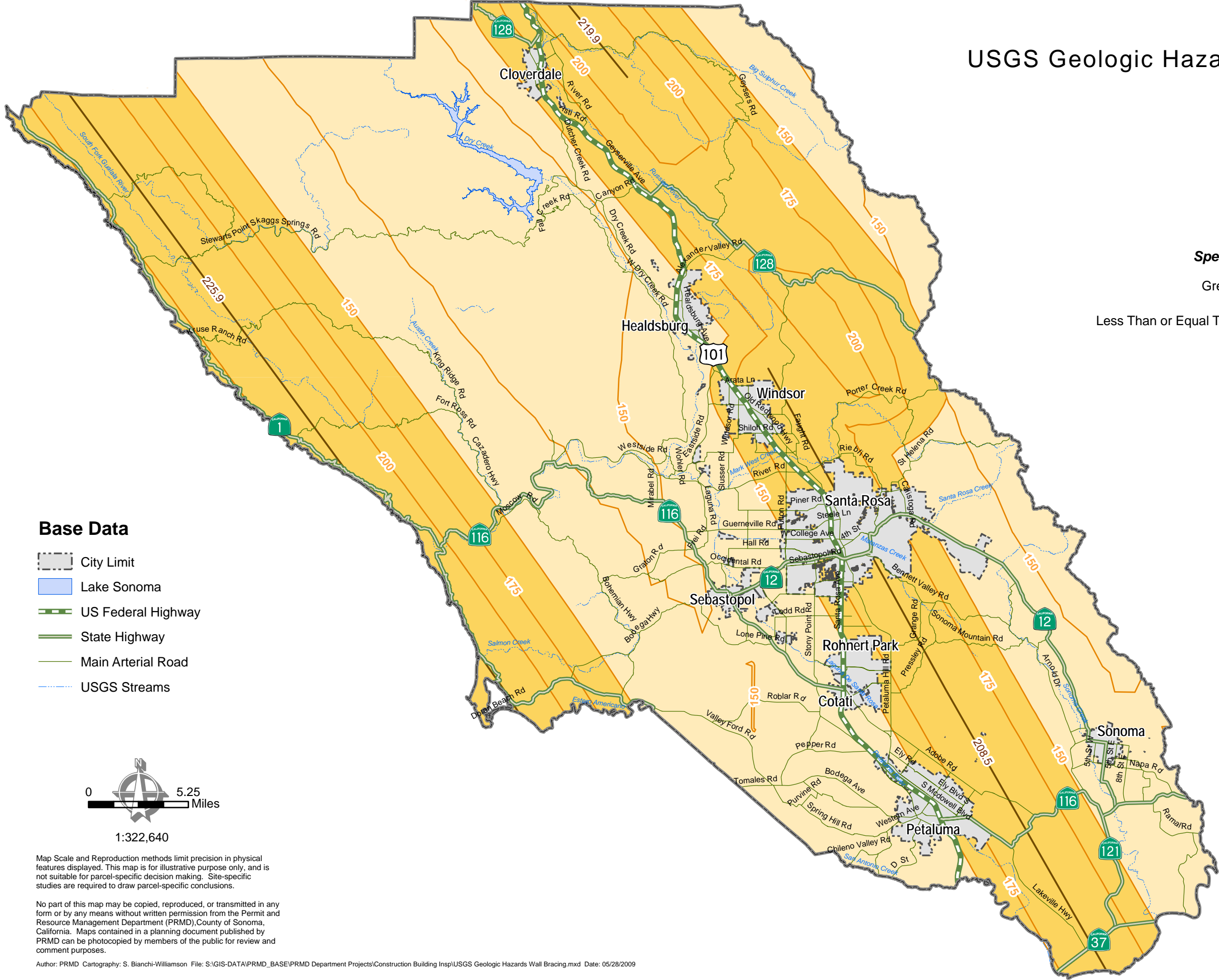
- City Limit
- Lake Sonoma
- US Federal Highway
- State Highway
- Main Arterial Road
- USGS Streams



Map Scale and Reproduction methods limit precision in physical features displayed. This map is for illustrative purpose only, and is not suitable for parcel-specific decision making. Site-specific studies are required to draw parcel-specific conclusions.

No part of this map may be copied, reproduced, or transmitted in any form or by any means without written permission from the Permit and Resource Management Department (PRMD), County of Sonoma, California. Maps contained in a planning document published by PRMD can be photocopied by members of the public for review and comment purposes.

Author: PRMD Cartography: S. Bianchi-Williamson File: S:\GIS-DATA\PRMD_BASE\PRMD Department Projects\Construction Building Insp\USGS Geologic Hazards Wall Bracing.mxd Date: 05/28/2009



Permit and Resource Management Department
 2550 Ventura Avenue, Santa Rosa, California 95403
 707-565-1900 FAX 707-565-1103

