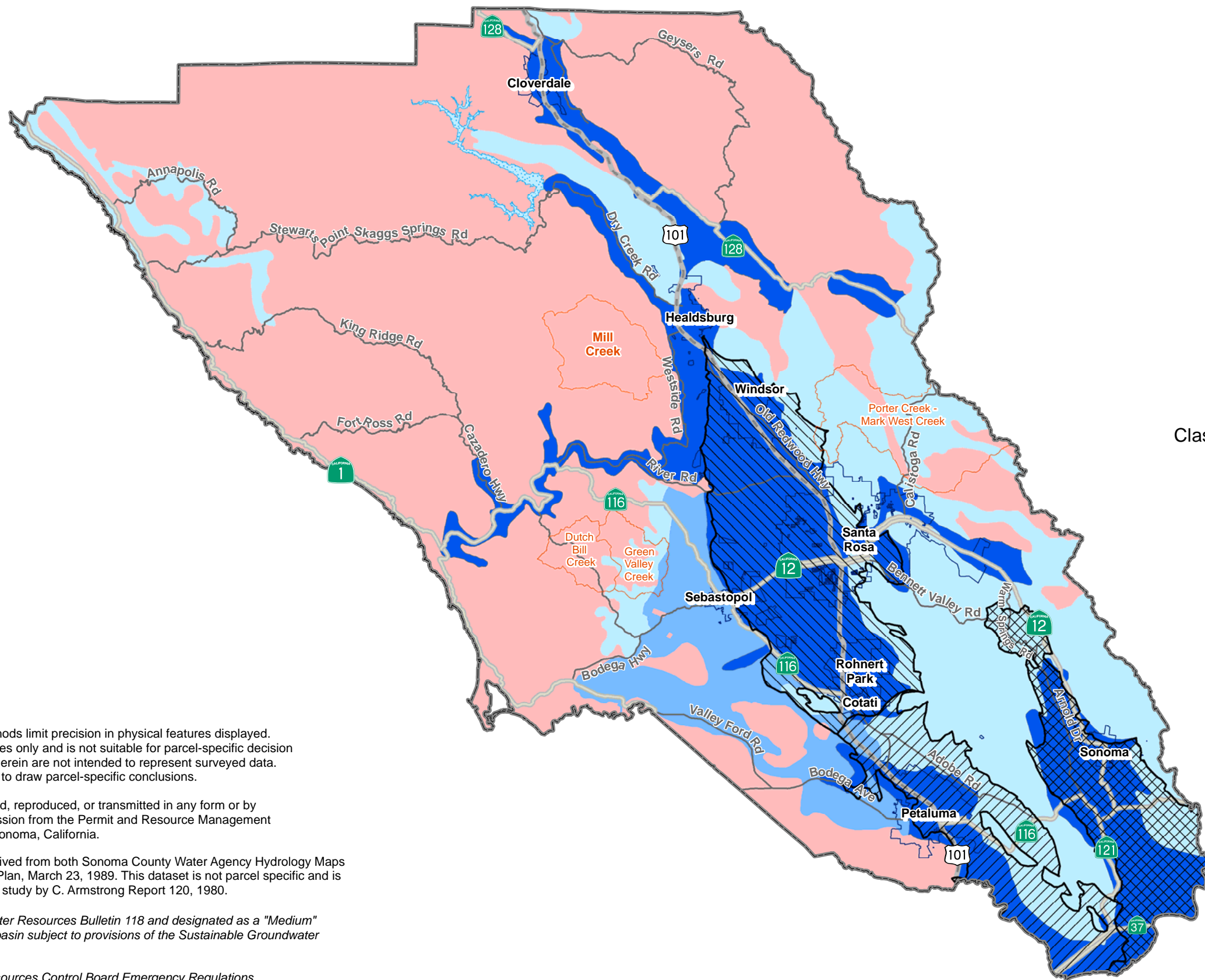







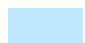

Groundwater Availability



*Priority Groundwater Basins

- Petaluma Valley 
- Santa Rosa Plain 
- Sonoma Valley 

Groundwater Availability Classifications

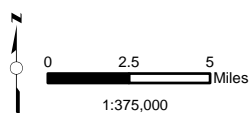
- Class 1 - Major Groundwater Basin Area 
- Class 2 - Major Natural Recharge Area 
- Class 3 - Marginal Groundwater Area 
- Class 4 - Low/Highly Variable Water Yield Area 

**Critical Habitat Area



Base Map Data

- City Limits 
- Lake Sonoma 
- US Federal Highway 
- State Highway 
- Street 



Map scale and reproduction methods limit precision in physical features displayed. This map is for illustrative purposes only and is not suitable for parcel-specific decision making. The parcels contained herein are not intended to represent surveyed data. Site-specific studies are required to draw parcel-specific conclusions.

No part of this map may be copied, reproduced, or transmitted in any form or by any means without written permission from the Permit and Resource Management Department (PRMD), County of Sonoma, California.

The original boundaries were derived from both Sonoma County Water Agency Hydrology Maps and County of Sonoma General Plan, March 23, 1989. This dataset is not parcel specific and is based on surface geology from a study by C. Armstrong Report 120, 1980.

*As defined in Department of Water Resources Bulletin 118 and designated as a "Medium" or a "High" priority groundwater basin subject to provisions of the Sustainable Groundwater Management Act.

** As defined by State Water Resources Control Board Emergency Regulations.

