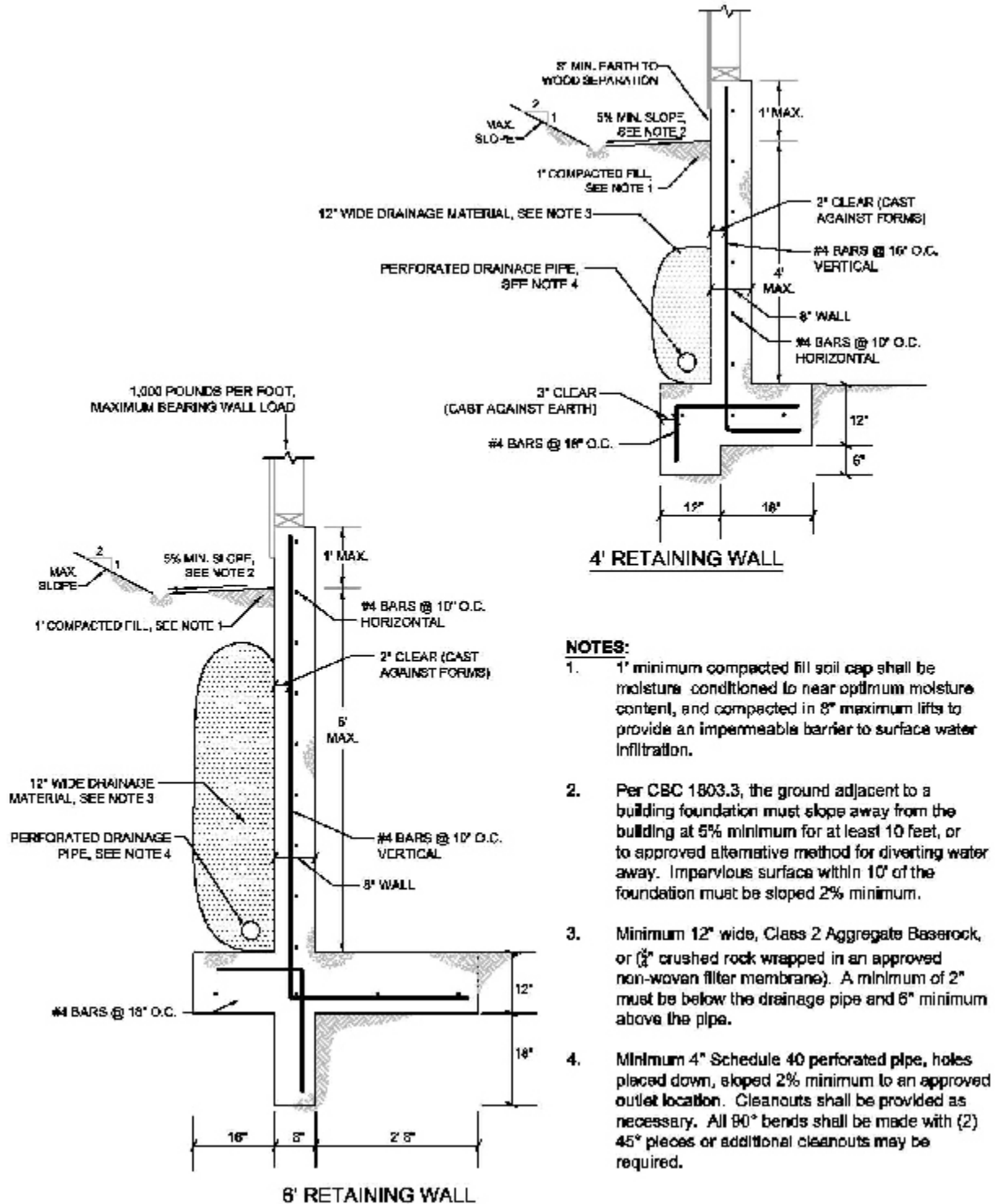
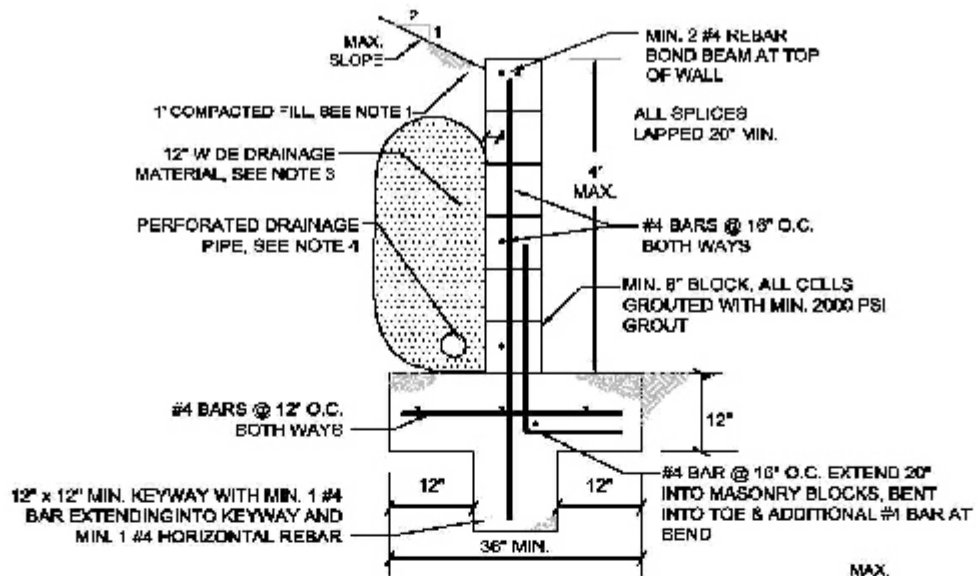


Retaining Wall Designs

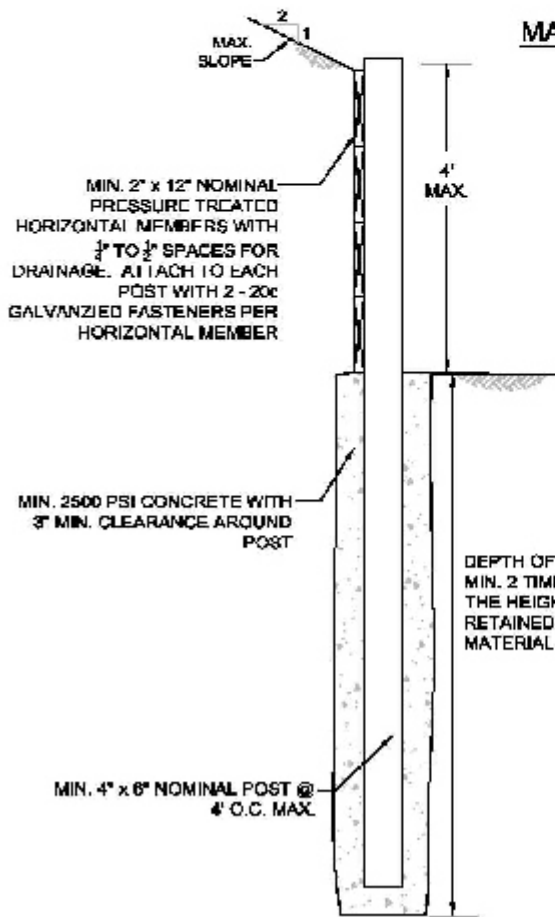
BPC-016

These are five (5) approved retaining wall designs. They may be used in lieu of a retaining wall designed by an engineer or architect. A site evaluation (see form CNI-002) and a building permit is required. Deviations from these plans or surcharge loads from adjacent structures, driveways, parking areas, terraced retaining wall(s), or steep slopes within a 45 degree angle from the bottom of the footing require a complete engineer's design.

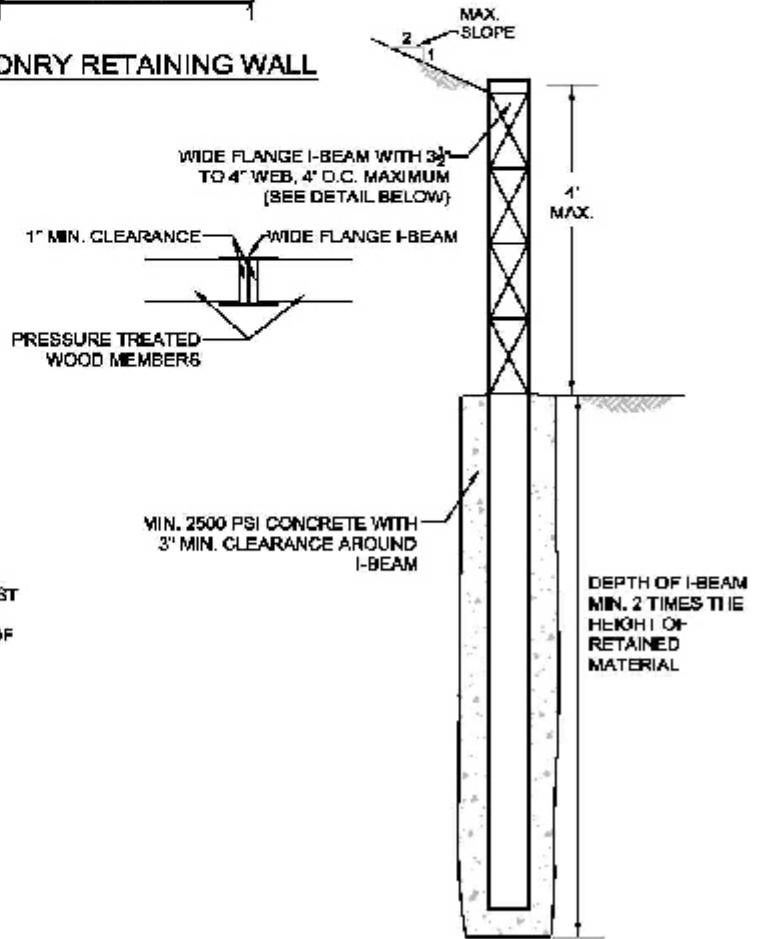




MASONRY RETAINING WALL



WOOD RETAINING WALL



I-BEAM RETAINING WALL