

Figure 1—Chlamydia Rate per 100,000 Persons
California and Sonoma County 2000-2010

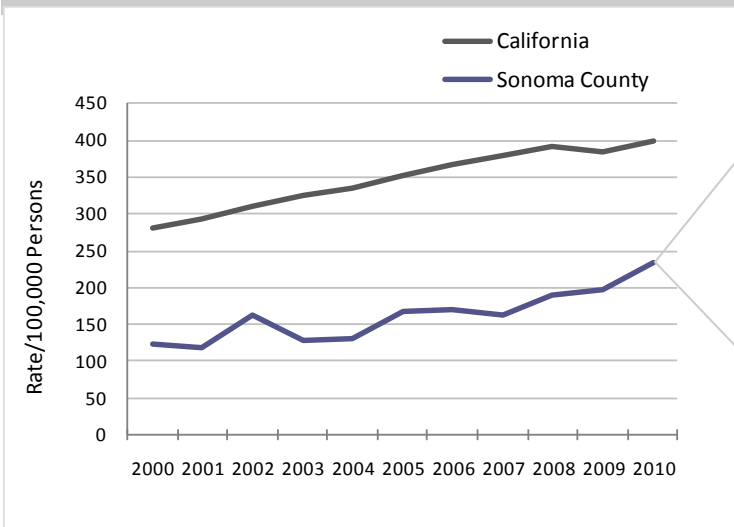
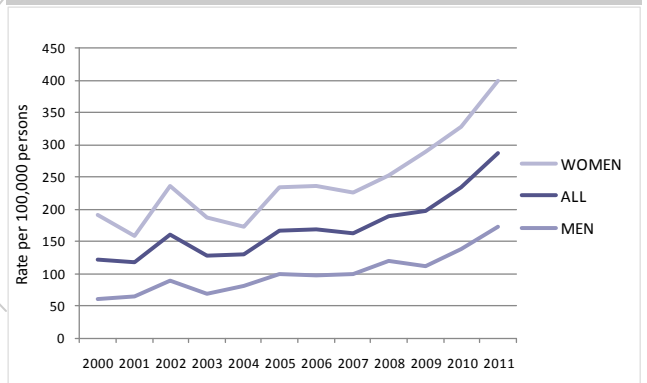


Figure 1a—Chlamydia Rate per 100,000 Persons by Gender
Sonoma County, 2000—2011*



*Estimated annualized rate for 2011, updated 9/25/2011

Case Rates

- Chlamydia is the most common reportable communicable disease in Sonoma County with 235 persons per 100,000 reported in 2010.¹
- The Sonoma County rate increased 19% above the 2009 rate while the California rate only increased 4% (Figure 1).²
- The expected 2011 estimated annual rate for Sonoma County shows an even sharper increase over 2010 if the current trend continues (Figure 1a).

Gender

- Chlamydia rates are two to three times higher in women compared to men (Figure 1a.)
- In Sonoma County in 2010, the rate of Chlamydia in women was 328 cases/100,000 vs. 139 cases/100,000 in men. (Likely reflects targeted screening directed at women and not a true difference in the burden of disease.)³

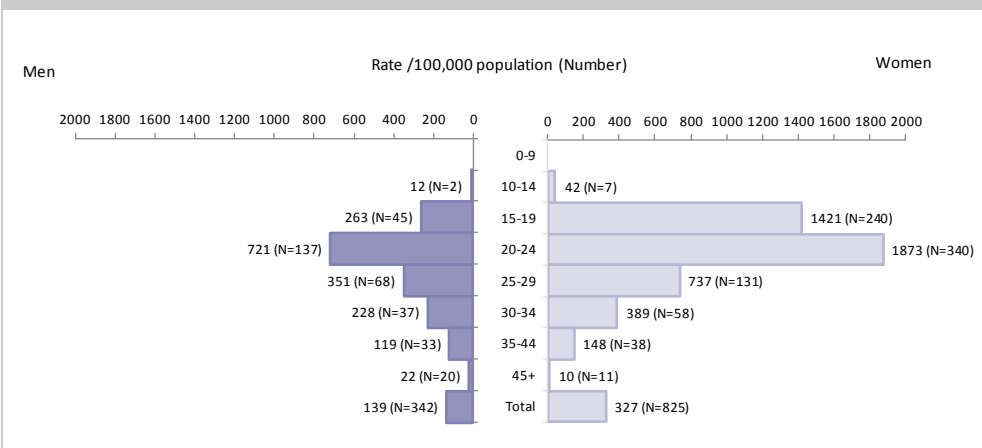
Age

- Women and men aged 20-24 have the highest rates of Chlamydia (1,873 cases per 100,000 and 721 cases/100,000, respectively), followed by women and men aged 15-19 years (1,421 cases/100,000 and 263 cases/100,000, respectively, Figure 2).
- California data also reflects this trend with the highest Chlamydia rates in women and men aged 20-24 (2,950 cases/100,000 and 1,087 cases/100,000, respectively).²

Repeat and Co-Infections

- Among individuals diagnosed with Chlamydia in 2010, 6.5% were reported with a repeat infection within 6 months.
- Among individuals diagnosed with Chlamydia in 2010, 11% had a previous Chlamydia infection reported between 2005 and 2009.
- Gonorrhea as a co-infection was diagnosed in ~2% of individuals with Chlamydia in 2010.

Figure 2—Chlamydia Rates per 100,000 by Age and Gender
Sonoma County, 2010



References

- Sonoma County Automated Vital Statistics System. Downloaded September 20, 2011.
- California Department of Health Services, STD Control Branch. Chlamydia, Cases and Rates, California Counties & Selected City Health Jurisdictions, 2006-2010 Provisional Data. <http://www.cdph.ca.gov/data/statistics/Documents/STD-Data-Chlamydia-Provisional-Tables.pdf>. Accessed October 4, 2011.
- Centers for Disease Control and Prevention, 2008 Sexually Transmitted Diseases Surveillance. <http://www.cdc.gov/std/stats08/chlamydia.htm>. Accessed October 3, 2011.

