

# Energy and Sustainability Program

## 2010 Climate Protection Action Plan Report



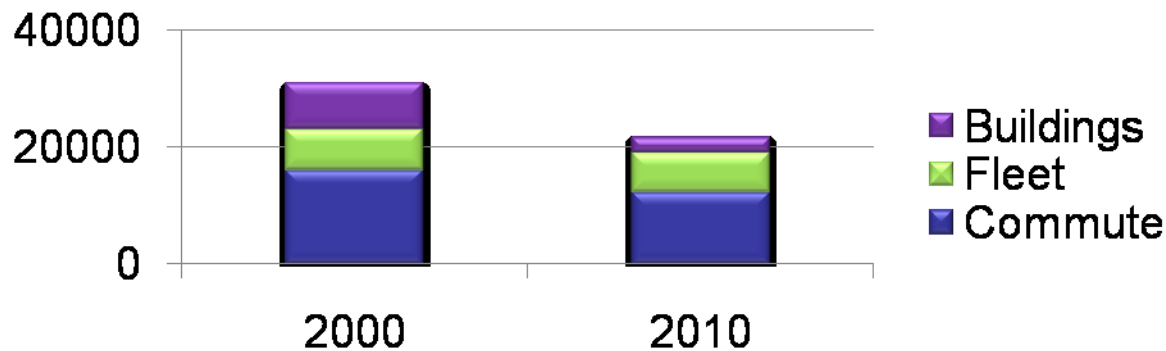
Liz Yager - Energy & Sustainability Manager  
Hope Marshall - Assistant E&S Manager  
Sam Ruark – Energy Watch Program Manager



# Story of the Sonoma County Energy Trek

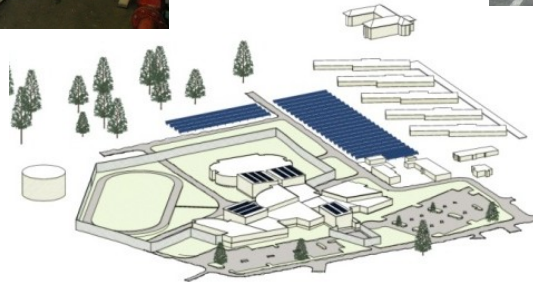


- 1998 Task Force – SP3 (Sustainable Policies and Practices Project)
- 2001 - Joined ICLEI
- 2002 – Made our first climate pledge and needed a plan
- 2004 - All Cities plus the County adopt aggressive GHG goals
- 2006 Climate Protection Action Plan – **20% ↓**



Goals  
And  
Measures

# Strategies to Reach Climate Goals





# Climate Protection Action Plan 2010 Results



## 20% GHG reduction goal met!

Updated Baseline	Baseline (eTons)	Target – eTons	Reduction to date	% of Target
Buildings	7,835	2,295	5,054	<b>220%</b>
Fleet	7,159	2,402	436	18%
Commute	15,787	3,157	3,635	115%
Total	30,781	7,855	9,125	<b>116%</b>



# Energy & Sustainability Into the Future



- Facilitate, track and report greenhouse gas reductions
- Provide leadership and support to internal and external regional partners

