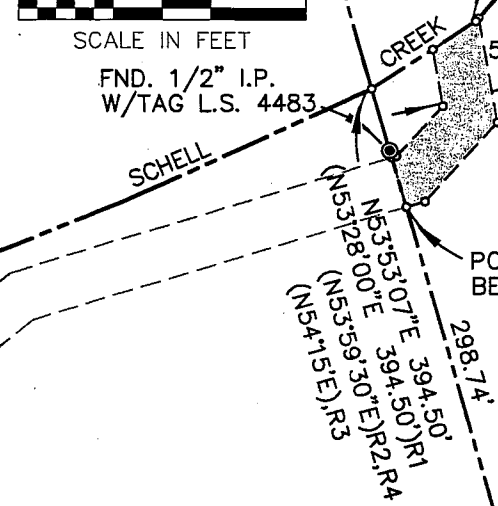
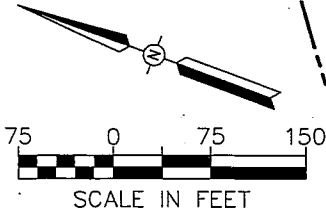


SONOMA VALLEY
COUNTY SANITATION DISTRICT
1188 O.R. 465

DETAIL A
N.T.S.

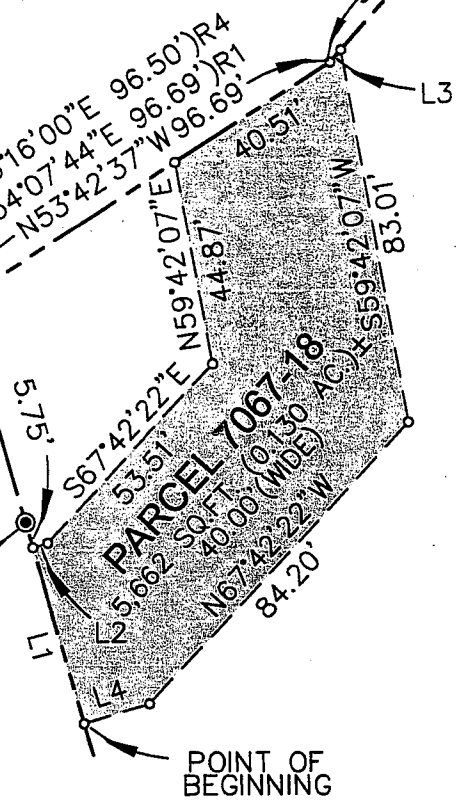


PARCEL 7067-18
5,662 SQ.FT. (0.130 AC.)±
40.00'(WIDE)
SEE DETAIL A

LINE	BEARING	DIST.
L1	N53°53'07"E	40.01'
L2	S37°08'48"E	3.42'
L3	S69°05'37"E	3.63'
L4	N37°08'48"W	15.07'

FND. 1/2" I.P.
W/TAG L.S. 4483

VISIO INTERNATIONAL
EMPLOYEES PENSION TRUST
DOC. 1987112176



FND. 1/2" I.P.
W/TAG L.S. 4483

FRANCINE M.
CLAYTON 1996 TRUST
DOC. 2006076462

A PORTION OF
LOT 4
51 MAPS 17

LEGEND

- DIMENSION POINT (NO MONUMENT SET OR FND.)
- FND. PROPERTY BOUNDARY MONUMENT AS NOTED
- PROPERTY BOUNDARY (RECORD TITLE INTEREST)
- - - EASEMENT BOUNDARY

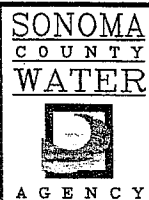
NOTES

1. BEARINGS AND DISTANCES SHOWN PARENTHECALLY ARE THAT OF RECORD (SEE REFERENCES).

REFERENCES

R1	RECORD OF SURVEY	523 MAPS 25
R2	RECORD OF SURVEY	51 MAPS 17
R3	GRANT DEED	DOC. 1987112176
R4	GRANT DEED	1188 O.R. 465
R5	GRANT DEED	DOC. 2006076462

HIGHWAY 12



REVISIONS	REV.	DATE	BY

SONOMA VALLEY COUNTY SANITATION DISTRICT

EXHIBIT A-1

PLAT TO ACCOMPANY LEGAL DESCRIPTION
TRUNK MAIN REPLACEMENT PROJECT
PARCEL 7067-18

PROJECT/TASK:	7067-04
DATE :	04/01/08
DRAWN BY:	JM
CHECKED BY:	
SHEET NO.	1 OF 2

\\SP-Data\Survey\and Projects\SVCS\TrunkMainReplacement_PN7067\7067Plats.dwg