

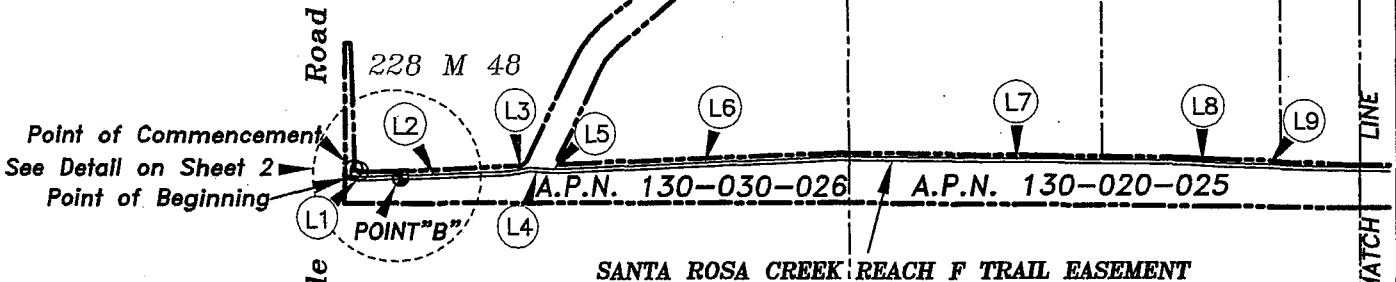
**SCHEMATIC LOCATION MAP  
OF SONOMA COUNTY**

**NOTES**

1. Basis of Bearings is S89°13'26"W 6977.08' between found SCWA control points shown hereon as POINT "A" and POINT "B".
2. All distances and dimensions are in feet and decimals thereof.
3. See Sheet 2 of 2 for "Basis of Bearing and Tie Detail".



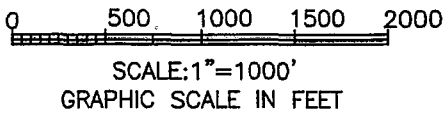
EASEMENT C/L LINE TABLE		
LINE	LENGTH	BEARING
L1	84.75'	S86°09'05"E
L2	763.06'	N87°51'20"E
L3	111.13'	N78°58'42"E
L4	78.74'	S86°14'22"E
L5	87.94'	S87°22'22"E
L6	1519.68'	N87°30'18"E
L7	1747.73'	S89°11'55"E
L8	191.41'	S86°35'08"E
L9	501.15'	S88°00'46"E



**SANTA ROSA CREEK REACH F TRAIL EASEMENT**

**LEGEND**

- ⊙ Found 3" SCWA monument as described
- Found SCWA control point
- Approximate boundary line of Sonoma County Flood Control & Water Conservation District
- Approximate other boundary line
- 20-foot wide trail easement

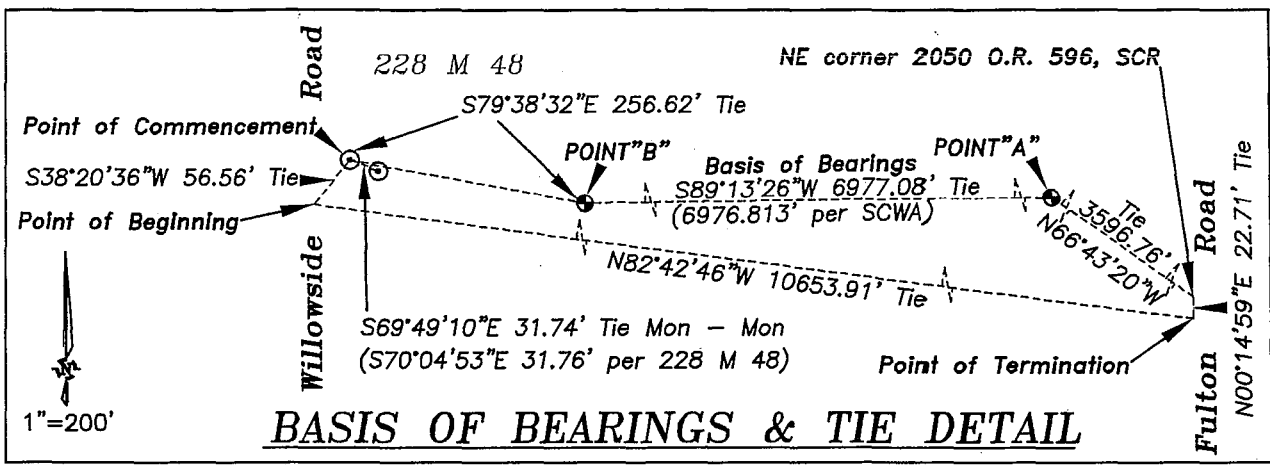


08-22-09 GENERAL RIGHT-OF-WAY SR CREEK REACH F PTN

**PACIFIC LAND SURVEYS**  
P.O. BOX 316  
BODEGA, CA 94923  
707.872.3208

SANTA ROSA CREEK TRAIL REACH F  
WILLOWSIDE ROAD TO FULTON ROAD  
PLAT TO ACCOMPANY LEGAL DESCRIPTION OF  
GRANT OF EASEMENT TO COUNTY OF SONOMA

EXHIBIT  
A-1  
SHT 1 OF 2

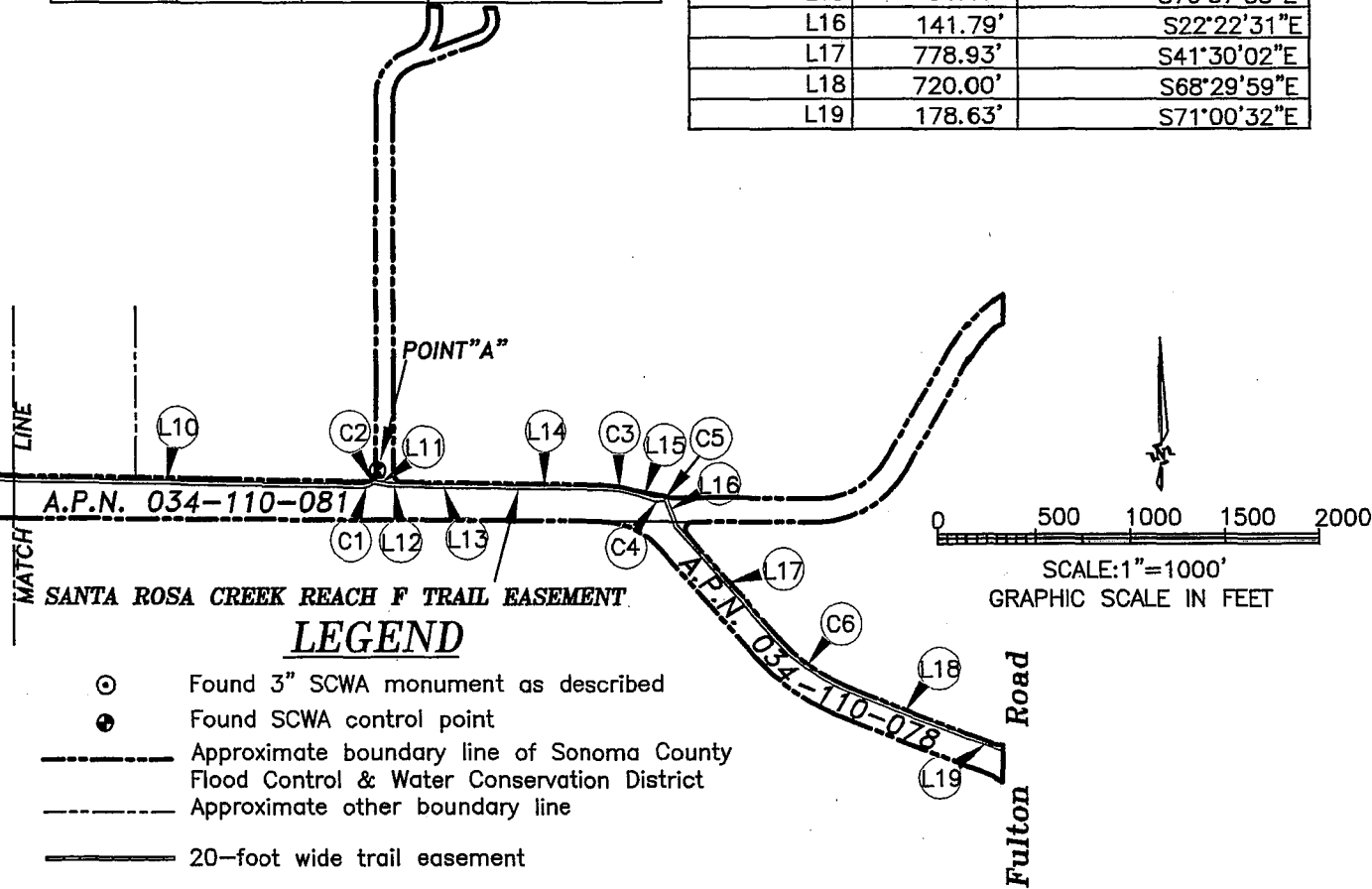


**BASIS OF BEARINGS & TIE DETAIL**

EASEMENT C/L CURVE TABLE			
CURVE	LENGTH	RADIUS	DELTA
C1	45.75'	68.95'	38°01'09"
C2	20.24'	25.02'	46°20'54"
C3	195.11'	598.00'	18°41'37"
C4	46.14'	63.83'	41°24'58"
C5	23.56'	15.00'	90°00'00"
C6	441.55'	937.02'	26°59'58"

EASEMENT C/L LINE TABLE		
LINE	LENGTH	BEARING
L9	501.15'	S88°00'46"E
L10	2104.65'	S89°05'44"E
L11	70.79'	S80°45'59"E
L12	68.39'	S86°59'31"E
L13	448.67'	S88°49'10"E
L14	625.00'	S89°39'10"E
L15	91.18'	S70°57'33"E
L16	141.79'	S22°22'31"E
L17	778.93'	S41°30'02"E
L18	720.00'	S68°29'59"E
L19	178.63'	S71°00'32"E

GENERAL RIGHT-OF-WAY SR CREEK REACH F PTN 08-22-09



**LEGEND**

- ⊙ Found 3" SCWA monument as described
- Found SCWA control point
- - - - - Approximate boundary line of Sonoma County Flood Control & Water Conservation District
- - - - - Approximate other boundary line
- 20-foot wide trail easement

**PACIFIC LAND SURVEYS**  
 P.O. BOX 316  
 BODEGA, CA 94922  
 707.875.3208

SANTA ROSA CREEK TRAIL REACH F  
 WILLOWSIDE ROAD TO FULTON ROAD  
 PLAT TO ACCOMPANY LEGAL DESCRIPTION OF  
 GRANT OF EASEMENT TO COUNTY OF SONOMA

EXHIBIT  
 A-1  
 SHT 2 OF 2