

## IN THIS ISSUE:

- ◊ Online Pesticide Use Reporting
- ◊ Glassy-winged Sharpshooter Update
- ◊ Animal Care and Control Director Recruitment
- ◊ Hazardous Materials Program

133 AVIATION BLVD.,  
STE. 110  
SANTA ROSA, CA 95403

PHONE:  
(707) 565-2371

FAX:  
(707) 565-3850

E-MAIL:  
SONOMAAG@SONOMA-  
COUNTY.ORG

WEB SITE:  
SONOMA-COUNTY.  
ORG/AGCOMM

## ONLINE PESTICIDE USE REPORTING

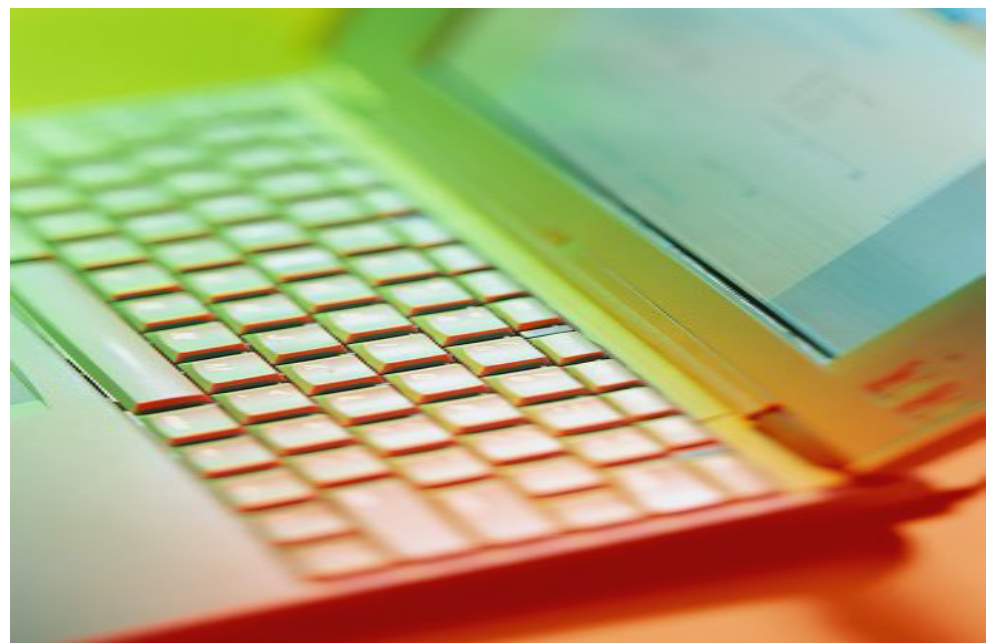
Did you know you can now submit your Pesticide Use Reports (PURs) online? We have implemented a new feature of our permitting system that allows growers and pest control businesses to submit their PURs electronically. This will save you both time and the cost of a postage stamp and saves our office both time and money by requiring no manual data entry. The system will also help to ensure growers submit PURs without errors and ensure accuracy in reporting.

This new process is so simple that you can submit PURs as you complete your applications - instead of waiting until the end of the month to fill in the document. Pest control businesses

required to submit negative PURs (i.e. no use for the month), can also do this easily online.

To get started, growers and pest control businesses need to request a user login ID and password from our office. This can be done via email or by phone. To request a login and password go to: <https://www.rmmsweb.com/> then choose "Sonoma" from the list of counties.

For comprehensive instructions on this process you can visit our website at [www.sonoma-county.org/agcomm](http://www.sonoma-county.org/agcomm) and click on "Enter Pesticide Use Reports". If you wish to conduct this business over the phone, call our office at (707) 565-2371 and ask for Mary Halasz or Cree Morgan.



# GLASSY-WINGED SHARPSHOOTER (GWSS) UPDATE



Our staff has been busy inspecting incoming shipments of plant material originating from infested counties.

To comply with the quarantine requirements of Sonoma County, each nursery that ships potential host material from a county known to be infested with GWSS is required to notify our office ahead of time when shipping to nurseries in Sonoma County. When nurseries in our county receive the shipments they call for an inspection. Upon

satisfactory inspection, the plants are released to the nursery. Throughout the year, nurseries that received host plants are also inspected for evidence of any life stages of GWSS.

For the 2008 calendar year, our staff inspected 2,194 shipments of nursery stock that originated from GWSS infested counties. GWSS Program Lead, Dan Curtin, reported that 2008 was a successful year on the GWSS front, with no new life stages being found. During the months of April through October, 2008, 475 GWSS urban traps were deployed. These urban traps were serviced a total of 6,601 times.

150 GWSS traps were placed in 82 nurseries that receive plant material from infested counties. Both urban and nursery traps are serviced every two weeks.

Next time you see a GWSS inspection crew crawling through a forest of ornamental plants in a nursery store parking lot, let them know you appreciate the work they are doing!

## RECRUITMENT FOR ANIMAL CARE AND CONTROL DIRECTOR

We will begin recruitment for the new Director of Animal Care and Control (ACC). We have been fortunate to have Gary Templin as the interim part-time director during this transition. Gary joined the Agricultural Commissioner's Office in August 2008 as the interim director of ACC, after recently retiring as President of the East Bay Society for Prevention of Cruelty of Animals (SPCA). Gary brings extensive service and experience to us from

19-years as the President at the East Bay SPCA, where he strengthened services through organizational development, increased fund raising, new spay/neuter clinic and other facilities. Gary has been involved in similar projects for ACC, including establishing our ability to accept public donations for spay/neuter and other animal enrichment needs, completion of shelter needs assessment, and increasing public spay/neuter services with available funding.



