

Lisa Correia  
Agricultural Commissioner/Sealer

EDITORS: SUE OSTROM AND DAN CURTIN

## UPDATE ON LIGHT BROWN APPLE MOTH

### IN THIS ISSUE:

- ◊ Update on Light Brown Apple Moth (LBAM)
- ◊ LBAM Quarantine Information
- ◊ New Wildlife Specialist
- ◊ Reporting of Frost Damage to Winegrapes
- ◊ Section 18 Exemption for Vine Mealybug Mating Disruption
- ◊

133 AVIATION BLVD.,  
STE. 110  
SANTA ROSA, CA 95403

PHONE:  
(707) 565-2371

FAX:  
(707) 565-3850

E-MAIL:  
SONOMAAG@SONOMA-  
COUNTY.ORG

WEB SITE:  
WWW.SONOMA-COUNTY.  
ORG/AGCOMM

Since March 2007, when Light Brown Apple Moth (LBAM) invasive pest native to Australia, was confirmed for the first time in California and the continental United States, we have been servicing over 600 traps to detect any new sites as early as possible. Additionally, we have been providing outreach to the community and the agricultural and nursery industry, and responding to general inquiries from the community and industry.

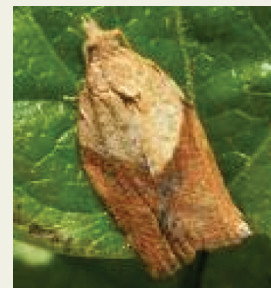
On February 26, 2008, a single LBAM was confirmed in Sonoma County for the first time. On April 21, 2008, a second LBAM was confirmed in Sonoma County in close proximity to the initial find. This second detection triggered state and federal quarantines in Sonoma County, which restricts the movement of fruits, vegetables, plants, and related articles within and from Sonoma County. The trap that caught the second male moth in Sonoma County was part of the delimitation trapping array placed by the California Department of Food and Agriculture (CDFA) after the initial find in February. Because of the second moth find, CDFA has increased trapping in the immediate area to detect any additional moths as early as possible. As of May 20, 2008, no further moths have been detected.

Under state law, CDFA has the responsibility and authority to control and eradicate invasive pests in California (Food and Agricultural Code Section 5321-5323). Based on this

second moth find, CDFA will place pheromone-infused twist ties in a 200-meter area surrounding each of the two moths detected using ground crews. This treatment method has been utilized effectively in other counties and is the preferred treatment for small isolated infestations. CDFA has stated there are NO plans for aerial spraying in Sonoma County for LBAM. Residents in the area will be notified in advance of the treatment, which is expected to begin in June 2008.

The Sonoma County Agricultural Commissioner's Office is responsible for the detection of noxious pests in the county, and to provide education and outreach to the community and agricultural industry regarding these pests. We are working directly with agriculture and related industries to help them meet state and/or federal requirements to move their commodities, and to ensure their business is impacted as little as possible.

Adult Light Brown  
Apple Moth



# SONOMA COUNTY AGRICULTURAL PRODUCERS AND SHIPPERS - LBAM QUARANTINE INFORMATION

With the second Light Brown Apple Moth (LBAM) find, there is now a state and federal quarantine to reduce the likelihood of spreading this exotic pest. Each of these quarantines has specific requirements, which are listed below. If you are going to be shipping any type of plant products out of the state, please contact the Sonoma County Agricultural Commissioner's office at (707) 565-2371, or email us at 'sonomaag@sonoma-county.org'. We will help to ensure your business is in compliance with all state and federal requirements so there is as little impact as possible on movement of agricultural products out of the county and state.

LBAM has been detected in several other counties in the State including: Alameda,

Contra Costa, Marin, Monterey, Santa Barbara, San Benito, Santa Clara, Santa Cruz, San Francisco, Santa Barbara, and San Mateo. In 2007, LBAM was also detected in Napa, San Luis Obispo, and Los Angeles Counties, which are now free of this pest.

The moth injures grapes, citrus, and deciduous fruit tree crops; feeds on host plants favored by a number of endangered species; and spoils the appearance of ornamental plants. It also threatens California's environment—including, redwood, oak, and cypress trees—by destroying, stunting or deforming young seedlings and damaging new growth in the forest canopy.

**State Quarantined Area Requirements – only affects immediate area where the two LBAM were found near the city of Sonoma:**

**Cropland from which fruits and vegetables are harvested and shipped will:**

- be trapped (by CDFA)
- be inspected within 30 days prior to shipping the harvested

**Nurseries that ship will:**

- be trapped
- have premises inspected
- need to implement an integrated pest management (IPM) program

**Retail nurseries that do not ship will:**

- be inspected once per month
- need to implement an IPM program

**Federal Interstate Quarantine Requirements - covers the entire county and only affects interstate movement of plant material:**

**Cropland from which fruits and vegetables are harvested and shipped will:**

- be trapped (by CDFA)
- if within the state quarantine area, must be inspected within 30 days prior to shipping the harvested commodity

**Nurseries that ship interstate will:**

- be trapped
- be inspected

# ANNOUNCEMENT OF NEW SONOMA COUNTY WILDLIFE SPECIALIST

We are pleased to announce Jeff Furlong as our new Wildlife Specialist as of May 20, 2008. Jeff grew up and worked on a cattle and sheep ranch in Southern Sonoma County. Over that time, he gained a very good understanding of controlling and managing predators. He is very excited about joining our team, and is looking forward to using his skills to help our agricultural industry and community. Jeff joins Joe Montoya (USDA Wildlife Specialist) who also serves Sonoma County in protecting livestock and other agricultural property. Please join us in welcoming and congratulating Jeff!



---

## REPORTING OF FROST DAMAGE TO WINEGRAPES

Please contact our office at (707) 565-2371, or email us at 'sonomaag@sonoma-county.org' to report frost damage to your winegrapes. We would like you to provide us with the following information:

- Appellation where your grapes are located
- Varieties that had damage
- Estimated number of acres of each variety that was damaged
- Estimated percent loss to each variety

---

## SECTION 18 EXEMPTION FOR VINE MEALYBUG (VMB) MATING DISRUPTION

On April 15, 2008, a Section 18 Emergency Exemption was issued to Sonoma, Marin, Napa, Fresno, Kern, Kings, Madera, Sacramento, San Joaquin, and Tulare Counties for the use of CheckMate® VMB Dispenser on grapes. Because this use is allowed by a Section 18 Emergency Exemption, a grower wishing to use this material must obtain a restricted materials permit with CheckMate® VMB listed and have on-hand at the use site a copy of the Section 18 labeling. A Private Applicator's Certificate, Qualified Applicators License or Qualified Applicators Certificate is required to qualify for a restricted materials permit.

The CheckMate® VMB Dispenser functions by disrupting the mating behavior of the VMB. Over time, the Dispenser releases a synthesized copy of the VMB sex pheromone, which prevents the flying male mealybug from finding a receptive female. The Section 18 labeling shows a dosage of 250 dispensers per acre, with one or two applications per season. The CheckMate® VMB Dispenser is intended for use in an integrated pest management (IPM) program that relies on a combination of control methods to control this pest. For more information call our office at (707) 565-2371.