

IN THIS ISSUE:

- ◊ Restricted Materials Validating Their Use
- ◊ Certified Private Applicator Workshop
- ◊ Apple Testing

133 AVIATION BLVD.,
STE. 110
SANTA ROSA, CA 95403

PHONE:
(707) 565-2371

FAX:
(707) 565-3850

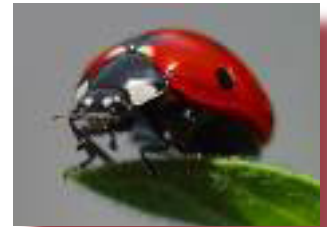
E-MAIL:
SONOMAAG@SONOMA-
COUNTY.ORG

WEB SITE:
SONOMA-COUNTY.
ORG/AGCOMM

RESTRICTED MATERIALS VALIDATING THEIR USE

In these changing times pesticides and their use continues to be scrutinized by a variety of interested stakeholders. How can you help to ensure the pesticides you need to continue to farm with will be available to you? One way, which many of you currently do, is to use integrated pest management (IPM) strategies. A brief reminder is often a good thing, and reading the following summary on IPM from University of California at Davis's IPM web site is no exception.

What is IPM? Integrated pest management (IPM) is an ecosystem-based strategy that focuses on long-term prevention of pests or their damage through a combination of techniques such as biological control, habitat manipulation, modification of cultural practices, and use of resistant varieties. Pesticides are used only after monitoring indicates they are needed according to established guidelines, and treatments are made with the goal of removing only the target organism. Pest control materials are selected and applied in a manner that minimizes risks to human health, beneficial and non target organisms, and the environment.



Along these same lines is determining (often based on multiple factors) when you need to use a restricted material. The consideration of alternatives (other pesticides with less risk to people and the environment) and mitigation measures (strategies used to reduce the hazard to people and the environment due to the restricted material being used) for restricted materials is essential to maintaining the integrity and viability of this process, without which permit holders would be required to file an Environmental Impact Report (EIR) for every restricted materials application.

As you may know, California regulations require each licensed agricultural pest control adviser, pest control operator, and grower to consider alternatives and mitigation measures for restricted materials. This means when determining if and when to use a pesticide that requires a permit, you consider and, if feasible, adopt any reasonable, effective and practical mitigation measures or use any feasible alternative that would substantially lessen any significant adverse impact on the environment.

The agricultural commissioner's issuance of restricted materials permits, and the process of consideration of alternatives and mitigation measures, plays a critical part in meeting the EIR equivalency requirements of the California Environmental Quality Act (CEQA). The restricted materials permit issuance process was developed to meet the EIR requirement; without this



RESTRICTED MATERIALS VALIDATING THEIR USE (CONTINUED)

process an EIR would be required for each application of a restricted material. Some of the restricted materials used in Sonoma County include: strychnine, paraquat (gramoxone), carbaryl (sevin), and 2,4-D.

If you have any questions or concerns please contact Stefan Parnay or Sue Ostrom at (707) 565-2371.

CERTIFIED PRIVATE APPLICATOR WORKSHOP

When: Thursday, December 7, 2006

Time: 8:15 am – 11:10 am

Registration: 8:30 am - 9:00 am

Where: Santa Rosa Veterans Memorial Building – Main Auditorium

You will receive two (2) Hours of Continuing Education.

Here's what to expect:

- ✧ 8:15 – 9:00 Registration
- ✧ 9:00 – 9:05 Introduction
Stefan Parnay, Chief Deputy Agricultural Commissioner
- ✧ 9:05 – 9:10 Year-end Review
Lisa Correia, Agricultural Commissioner/Sealer
- ✧ 9:10 – 9:50 Laws & Regulations Update
Sue Ostrom, Senior Agricultural Biologist/Standards Specialist
- ✧ 9:50 – 10:00 Exotic Pests of Concern:
Paul Turano, Agricultural Biologist/Standards Specialist III
- ✧ 10:00 – 10:10 Break
- ✧ 10:10 – 10:40 Common Pesticide Non-compliances
Priscilla Lane, Senior Agricultural Biologist/Standards Specialist
- ✧ 10:40 – 11:05 Managing & Controlling Birds
Dan Curtin, Agricultural Biologist/Standards Specialist III
- ✧ 11:05 – 11:10 Closing: Stefan Parnay, Chief Deputy Agricultural Commissioner



THE SPECIFICS:

- ✧ December 7, 2006
- ✧ From 9:00 am to 11:10 am
- ✧ Santa Rosa Veterans Memorial Building
1351 Maple Avenue,
Santa Rosa
- ✧ Two hours of
Continuing Education



APPLE TESTING

According to Sonoma County's 2005 Crop Report, there are nearly 3,000 acres of commercial apple trees in production. As part of our standardization duties, each year staff from the Agricultural Commissioner's Office tests several varieties of apples for maturity. Maturity testing is conducted to protect the industry by ensuring fruit that enters the market has met specific thresholds and to help maintain uniform quality. Testing and releasing also helps to protect individual growers by ensuring no one releases fruit too early and gains an unfair market advantage.

When a specific set of maturity thresholds is met for each variety the Agricultural Commissioner will release them for harvest and sale. Six varieties of apples are tested and released by this method, which include: McIntosh, Jonathan, Red Delicious, Golden Delicious, Rome, and Granny Smith.

Apples for testing are randomly selected from representative orchards following a specific protocol. The apples selected are brought back to our lab for maturity testing.



McIntosh, Jonathan, Red Delicious, Golden Delicious, and Rome apples are tested in two ways. First, they are pressure tested for firmness, and then a sugar test (brix) is conducted. These two tests are averaged and compared to a standardized graph that determines maturity.

Granny Smith apples are tested using iodine to indicate the level of starch versus sugar. Starch testing is another way of showing how much sugar an apple has.

However, Gravenstein apples are not required to be released by the Agricultural Commissioner, though courtesy tests are performed when requested by growers. When tested they are required to be at 10.5% sugar when harvested and or sold.

DID YOU KNOW:

- ◊ There are 1,200 agricultural producers of fruits, nuts, vegetables, nurseries, grains, etc. in Sonoma County?
- ◊ There are 167 registered organic growers in Sonoma County?
- ◊ There are 165 production nurseries in Sonoma County (not including retail nurseries)?

